

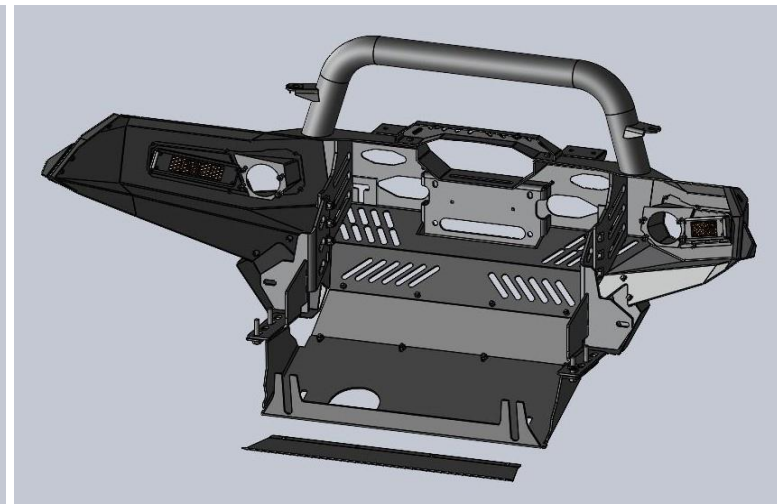
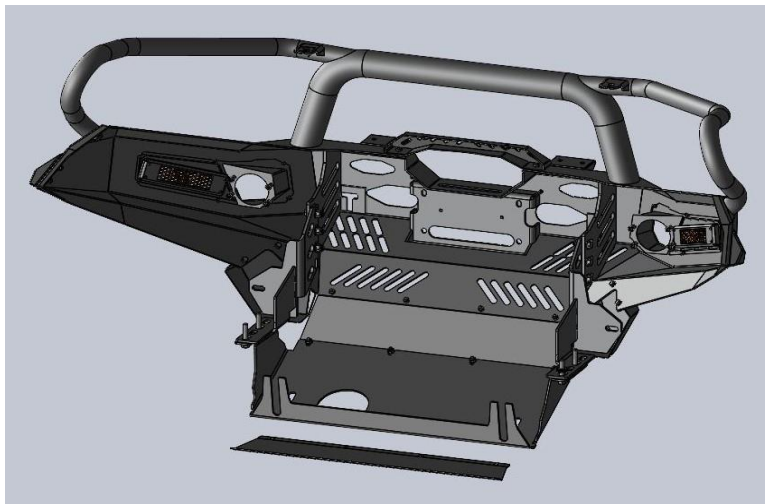
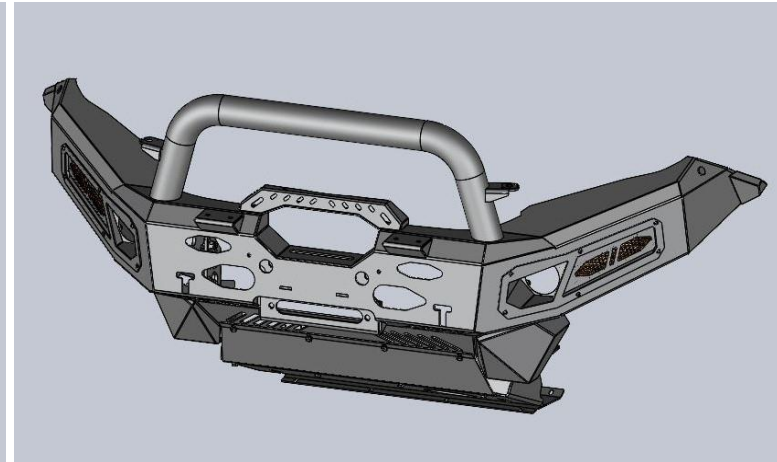
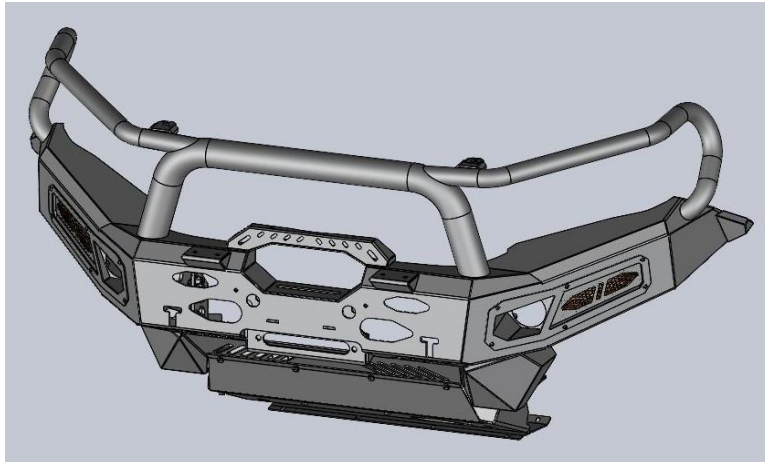
Fasteners Assembly Instructions for Nissan Navara NP300 Series 5 Bull Bar

Applying for products:

- 1147 MNT-NP300-S5-PC
- 1147 MNT-NP300-S5-PC-3H
- 1147 MNT-NP300-S5-PC-F-LH
- 1147 MNT-NP300-S5-PC-LH
- 1147 MNT-NP300-S5-PC-SH

Part number	Description	Qty/per set
AC01	Hex Head Bolt M12 x 40mmL x P1.25	6
AC02	Nyloc Nut M12 x P1.25	6
AC03	Steel Nord Lock Washer M12 x 13mmID x 19mmOD x 2.2mmT	6
AC04	Steel Flat Washer M12 x 13mmID x 26mmOD x 2.2mmT	32
AC05	Hex Head Bolt M12 x 60mmL x P1.25 - Haft theard27mm Zinc	4
AC06	Steel Spring Washer M12	4
AC09	Steel Flat Washer M8 x 8.4mmID x 17mmOD x 2.5mmT	28
AC10	Steel Spring Washer M8	20
AC11	Hex Head Bolt M8 x 25mmL x P1.25	12
AC12	Nyloc Nut M8 x P1.25	4
AC13	M6 x 12mmL x P1 Steel Hex socket (allen Key) & Domed Head Bolt	20
AC14	Steel Spring Washer M6	8
AC15	Steel Flat Washer M6 x 6.6mmID x 15mmOD x 2mmT	8
AC16	M4 x 16mmL x P0.7 Hex socket (allen Key) & Domed Head Bolt	10
AC17	Steel Flat Washer M4 x 4.3mmID x 9mmOD x 0.8mmT	4
AC18	Hex Head Bolt M8 x 20mmL x P 1.25	12
AC19	Steel Spring Washer M4	8
AC20	Nylock Nut M4 x P0.7	2

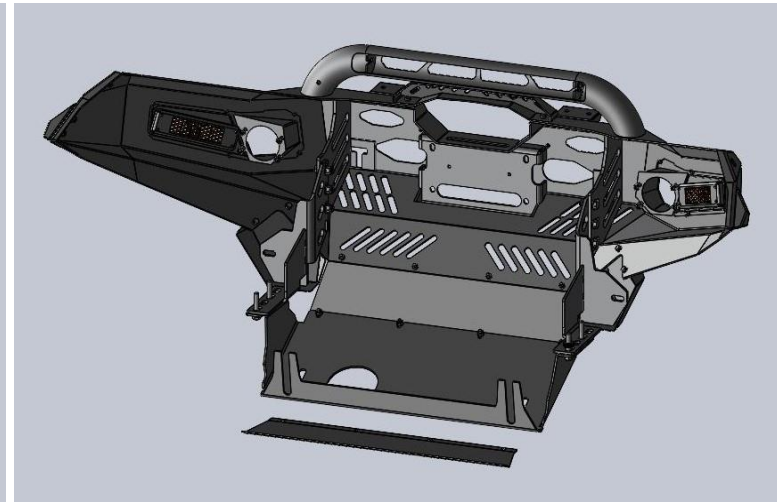
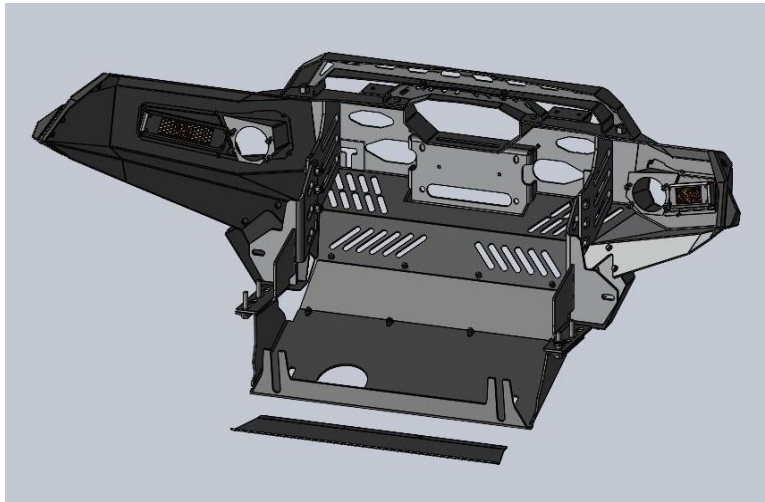
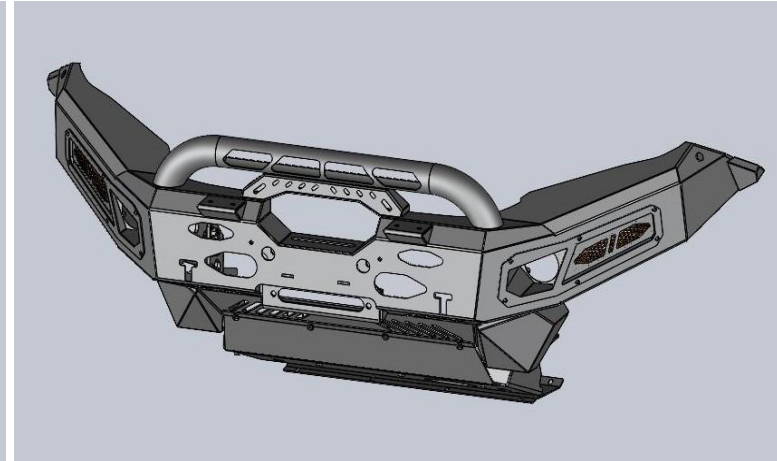
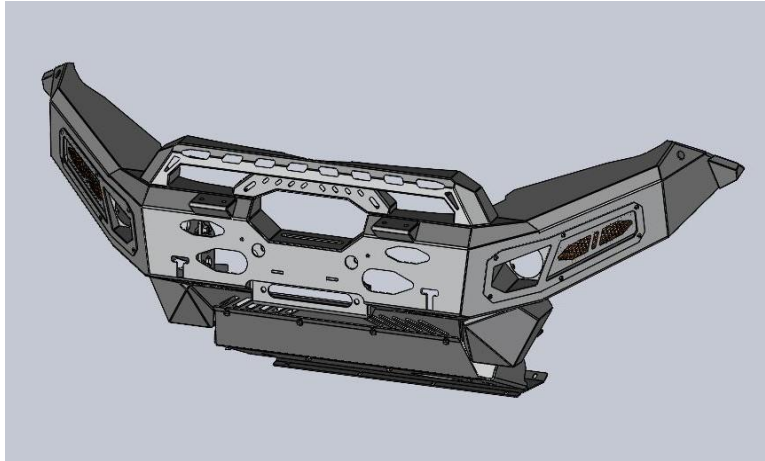
GENERAL VIEW



TRIPLE HOOP

SINGLE HOOP

GENERAL VIEW

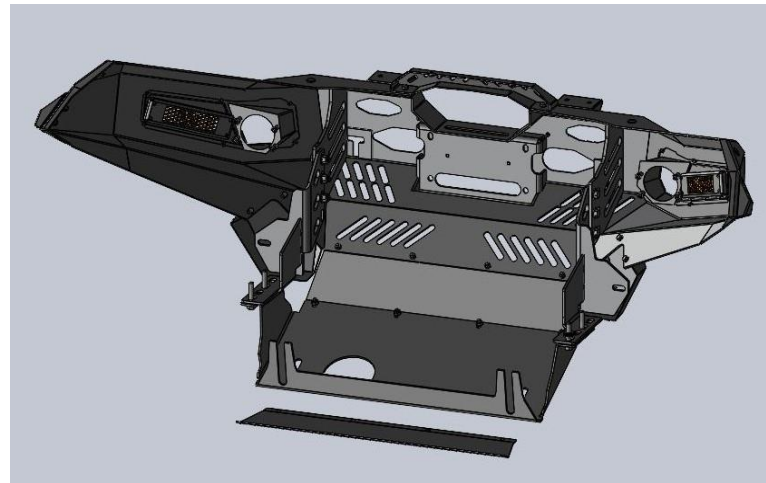
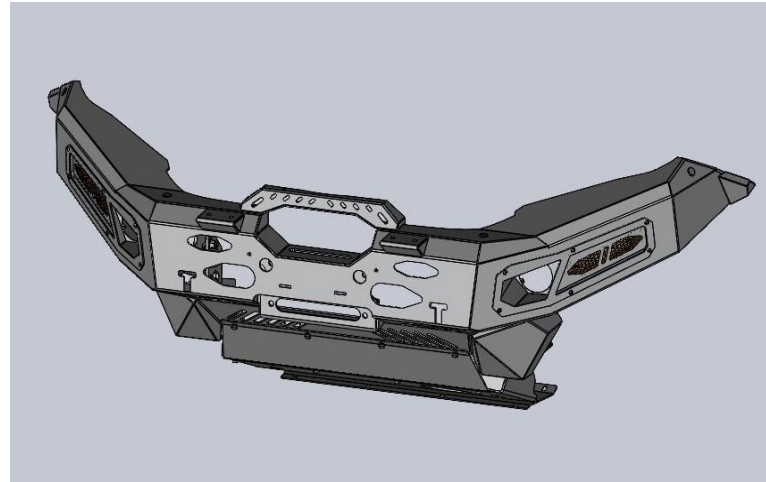


FABRICATED LOW HOOP

LOW HOOP

WI-011-R2

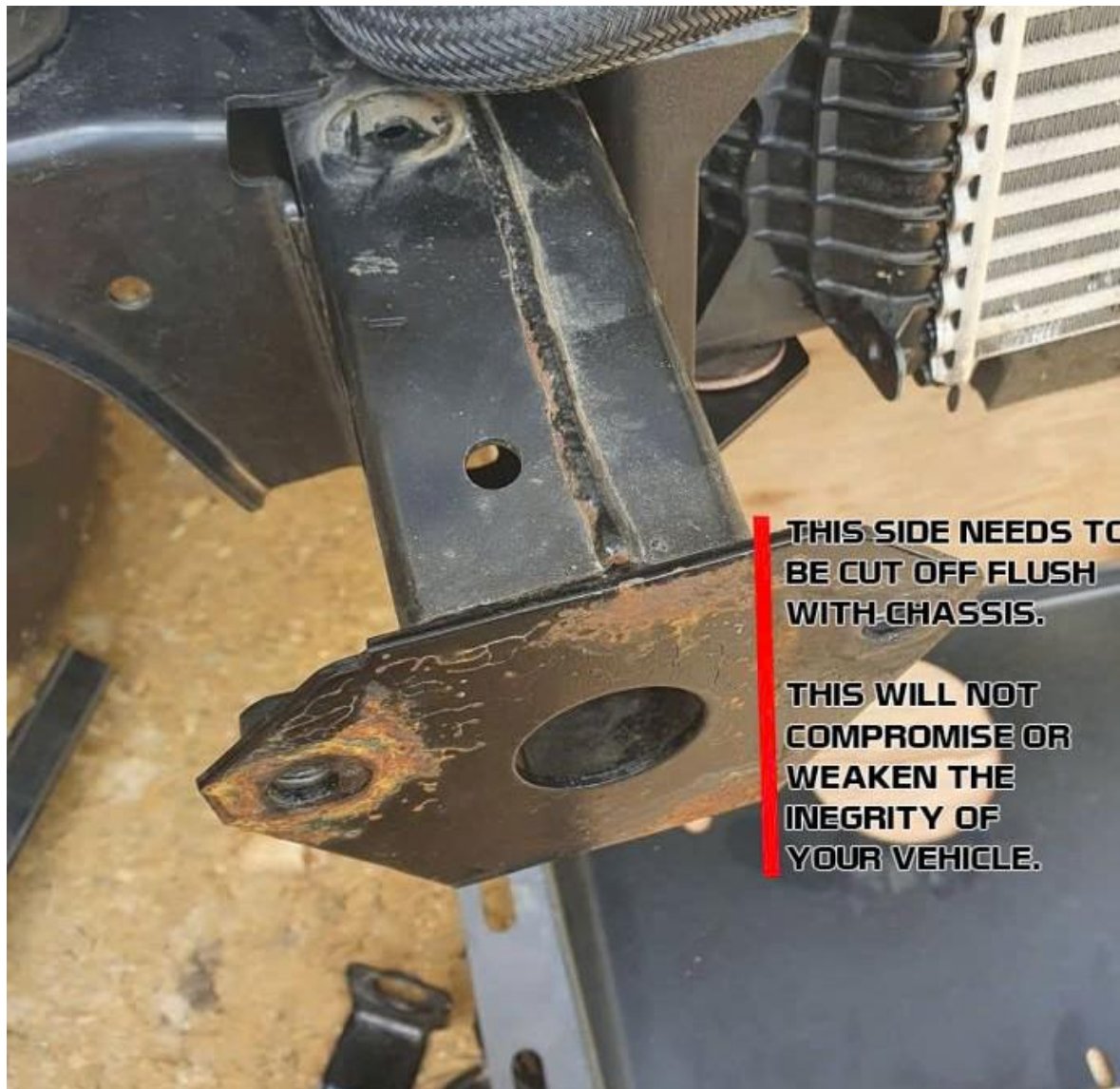
GENERAL VIEW



NO HOOP

WI-011-R2

STEP 1: Chassis Plate need to be trimmed before installing the bull bar.

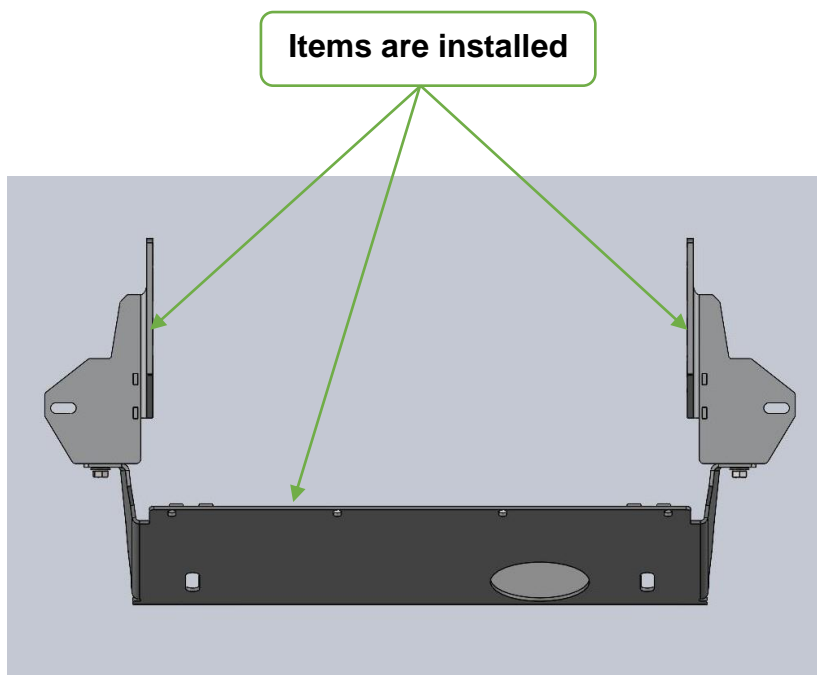
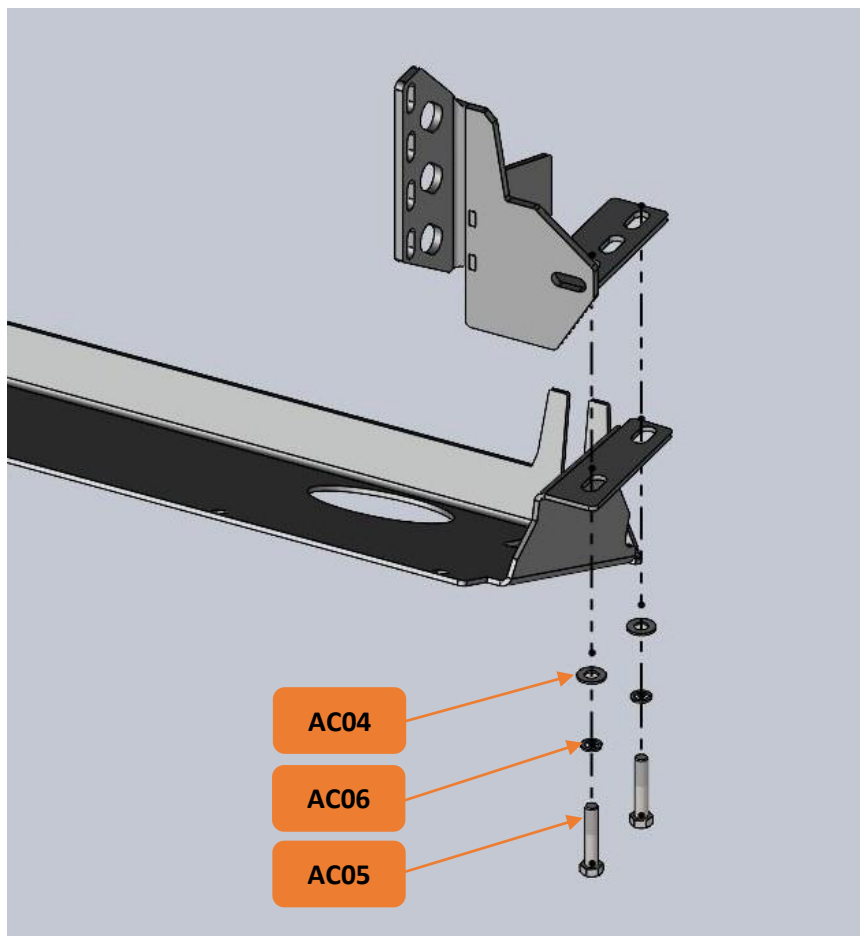


**THIS SIDE NEEDS TO
BE CUT OFF FLUSH
WITH CHASSIS.**

**THIS WILL NOT
COMPROMISE OR
WEAKEN THE
INEGRITY OF
YOUR VEHICLE.**

WI-011-R2

STEP 2: Install Brackets into the Car, bolted both sides with 4 positions.



AC04 x 04 pcs : Steel Flat Washer M12 x 13mmID x 26mmOD x 2.2mmT

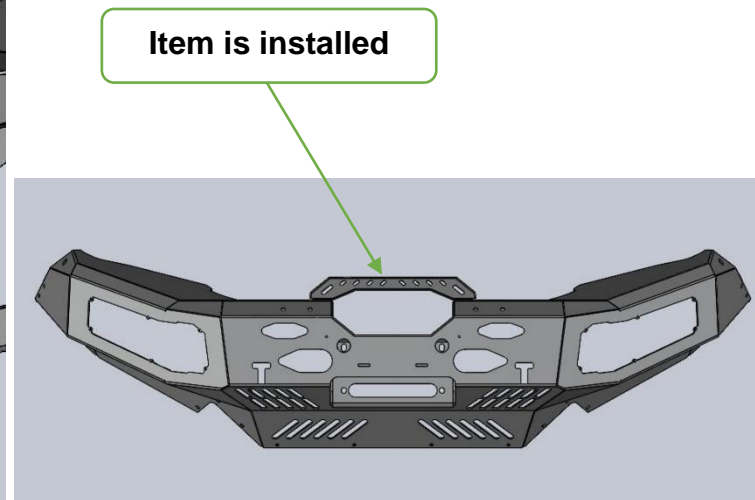
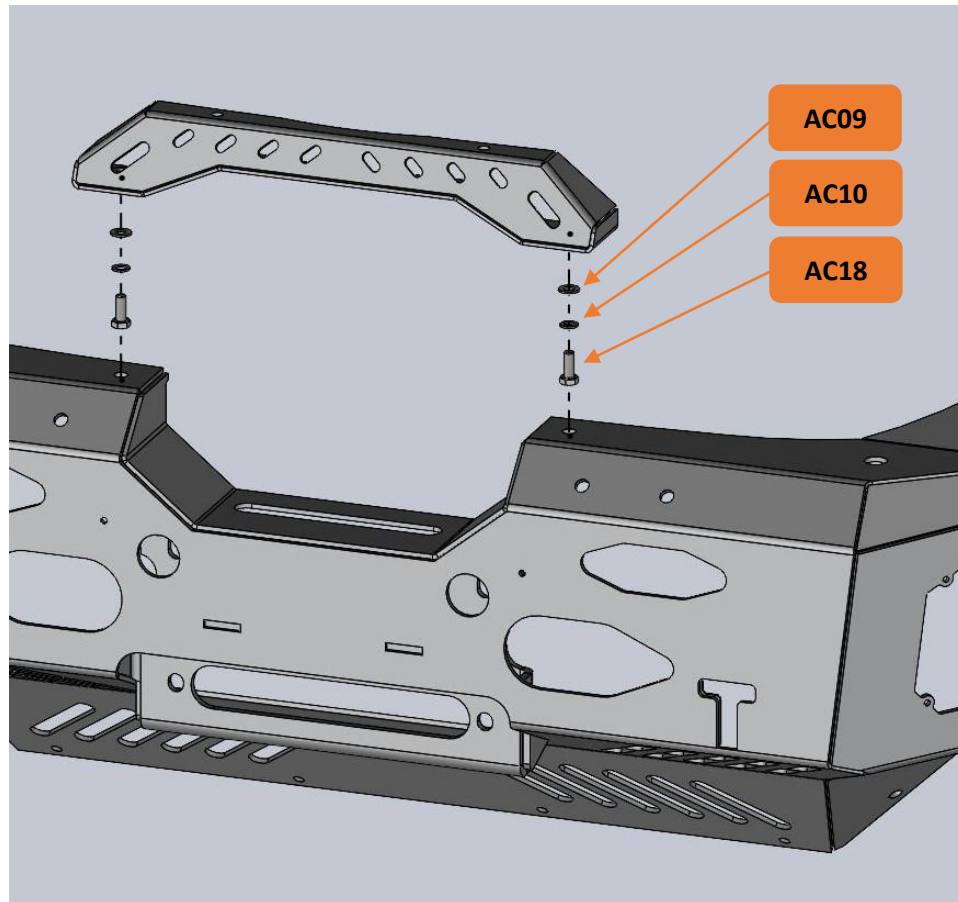
AC05 x 04 pcs : Hex Head Bolt M12 x 60mmL x P1.25 - Haft theard27mm Zinc

AC06 x 04 pcs : Steel Spring Washer M12

Bolt Tightening Torque: 88(Nm)

WI-011-R2

STEP 3.1: Install Upper Head into the Bull Bar Body, bolted with 2 positions.



AC09 x 02 pcs : Steel Flat Washer M8 x 8.4mmID x 17mmOD x 2.5mmT

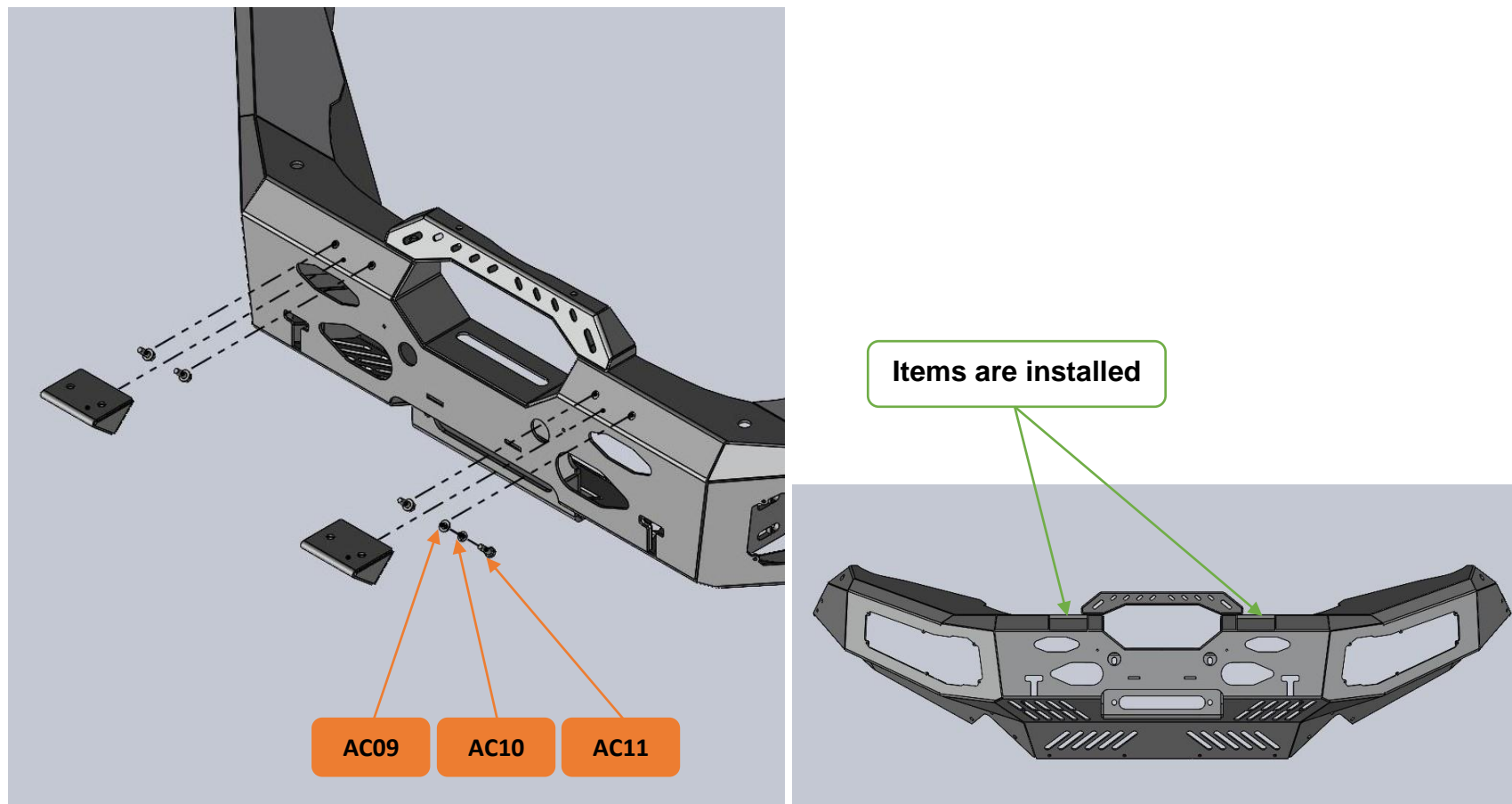
AC10 x 02 pcs : Steel Spring Washer M8

AC18 x 02 pcs : Hex Head Bolt M8 x 20mmL x P 1.25

Bolt Tightening Torque: 24(Nm)

WI-011-R2

STEP 3.2: Install Fog Light Bracket into the Bull Bar Body, bolted both sides with 4 positions.



AC09 x 04 pcs : Steel Flat Washer M8 x 8.4mmID x 17mmOD x 2.5mmT

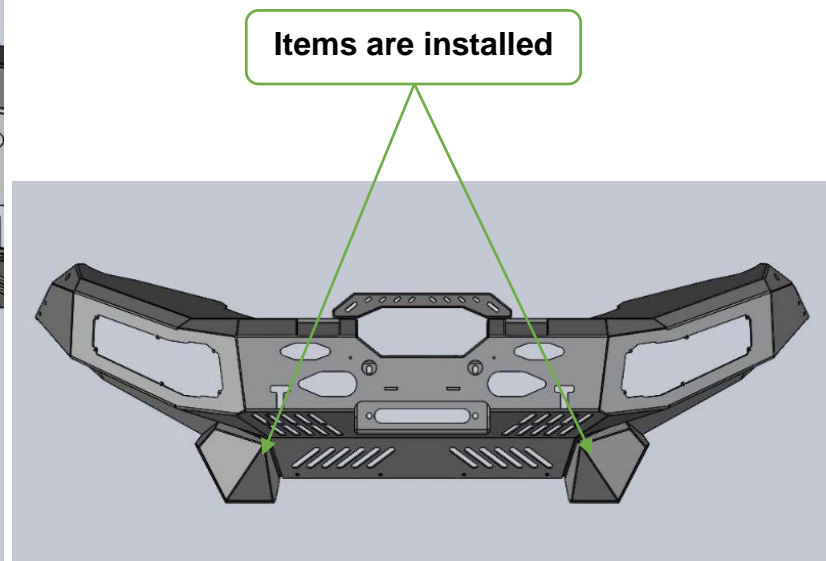
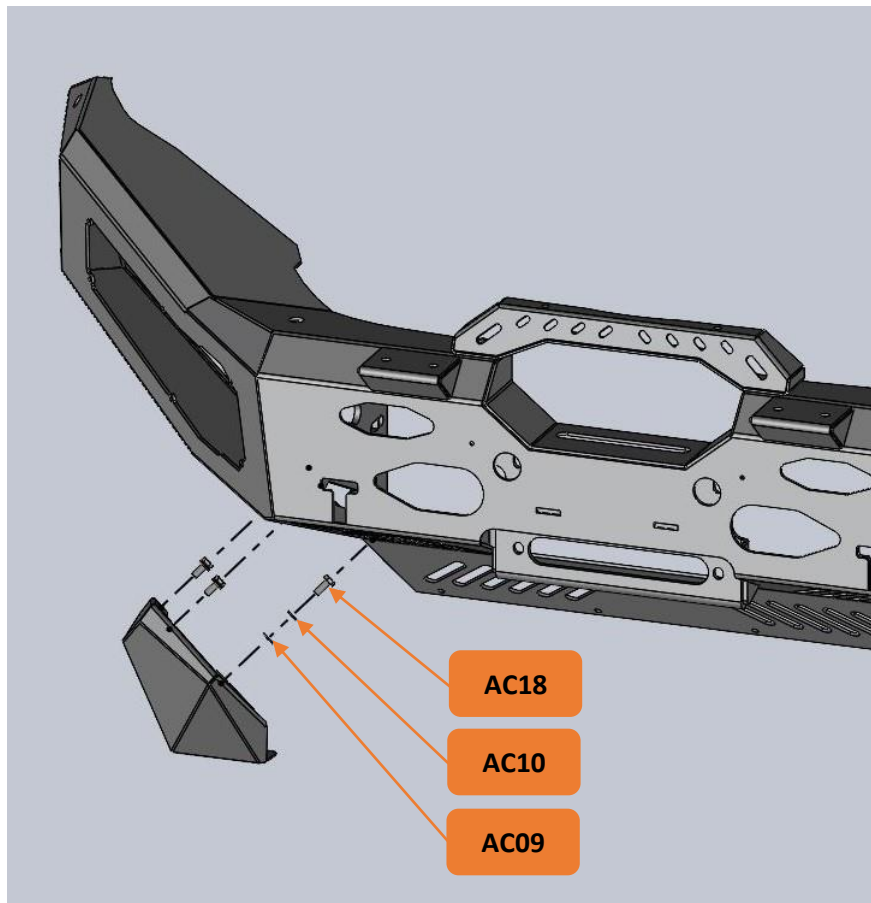
AC10 x 04 pcs : Steel Spring Washer M8

AC11 x 04 pcs : Hex Head Bolt M8 x 25mmL x P1.25

Bolt Tightening Torque: 24(Nm)

WI-011-R2

STEP 3.3: Install Bottom Cover RH & LH into the Bull Bar Body, bolted both sides with 6 positions.



AC09 x 06 pcs : Steel Flat Washer M8 x 8.4mmID x 17mmOD x 2.5mmT

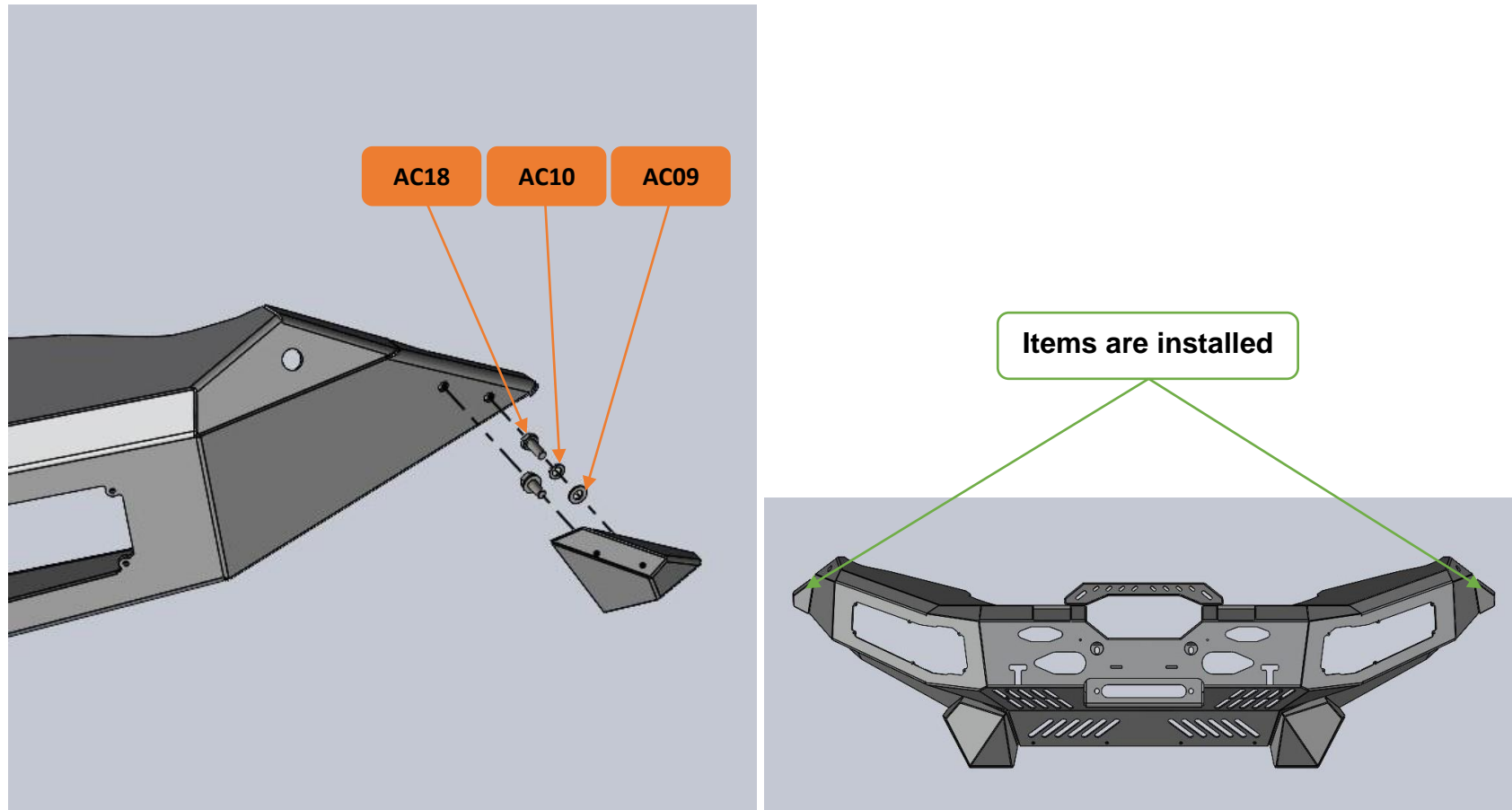
AC10 x 06 pcs : Steel Spring Washer M8

AC18 x 06 pcs : Hex Head Bolt M8 x 20mmL x P 1.25

Bolt Tightening Torque: 24(Nm)

WI-011-R2

STEP 3.4: Install Flare Cover RH & LH into the Bull Bar Body, bolted both sides with 4 positions.



AC09 x 04 pcs : Steel Flat Washer M8 x 8.4mmID x 17mmOD x 2.5mmT

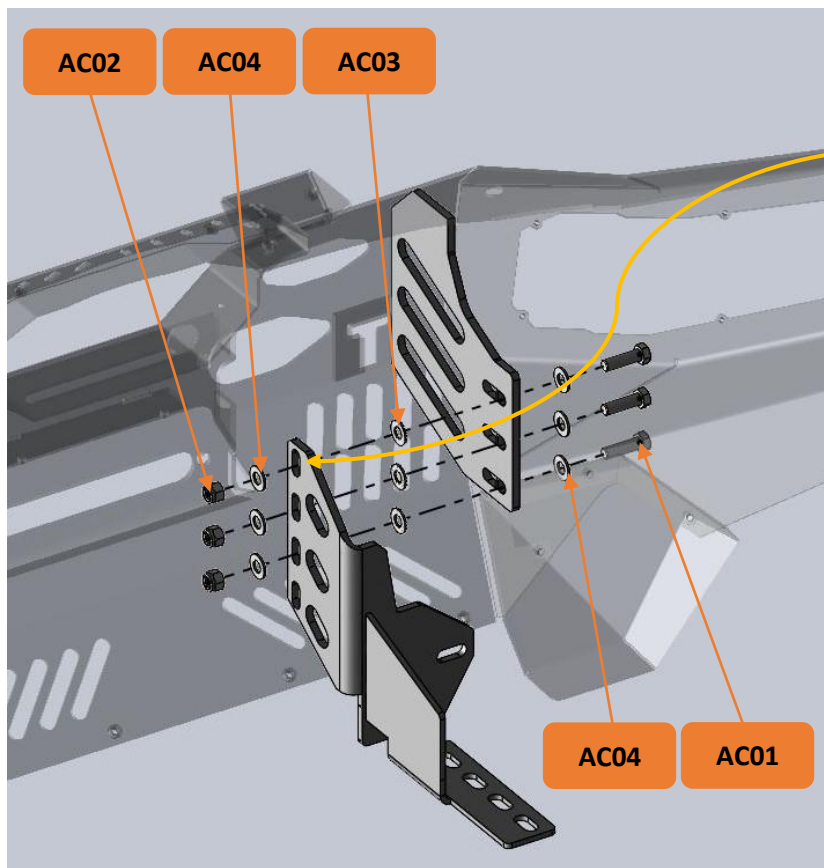
AC10 x 04 pcs : Steel Spring Washer M8

AC18 x 04 pcs : Hex Head Bolt M8 x 20mmL x P 1.25

Bolt Tightening Torque: 24(Nm)

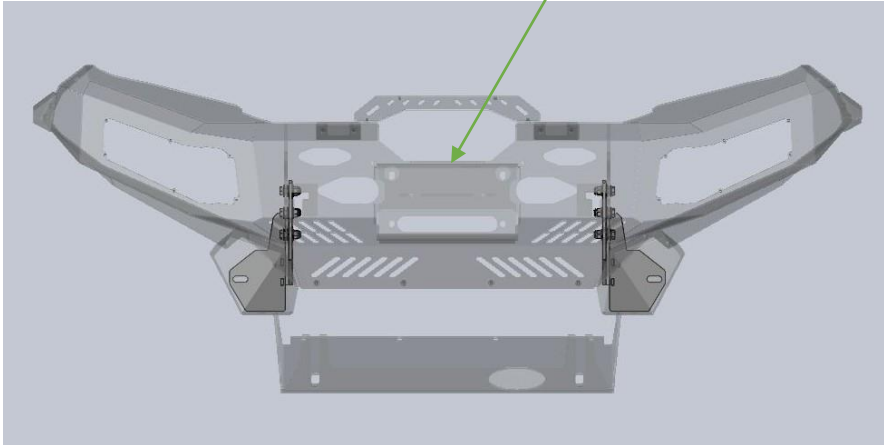
WI-011-R2

STEP 3.5: Install Bull Bar Body into the Car, bolted both sides with 6 positions.



Body Lift: use 3 upper holes
No Body Lift: Use 3 lower holes

Item is installed



AC01 x 06 pcs : Hex Head Bolt M12 x 40mmL x P1.25

AC02 x 06 pcs : Nyloc Nut M12 x P1.25

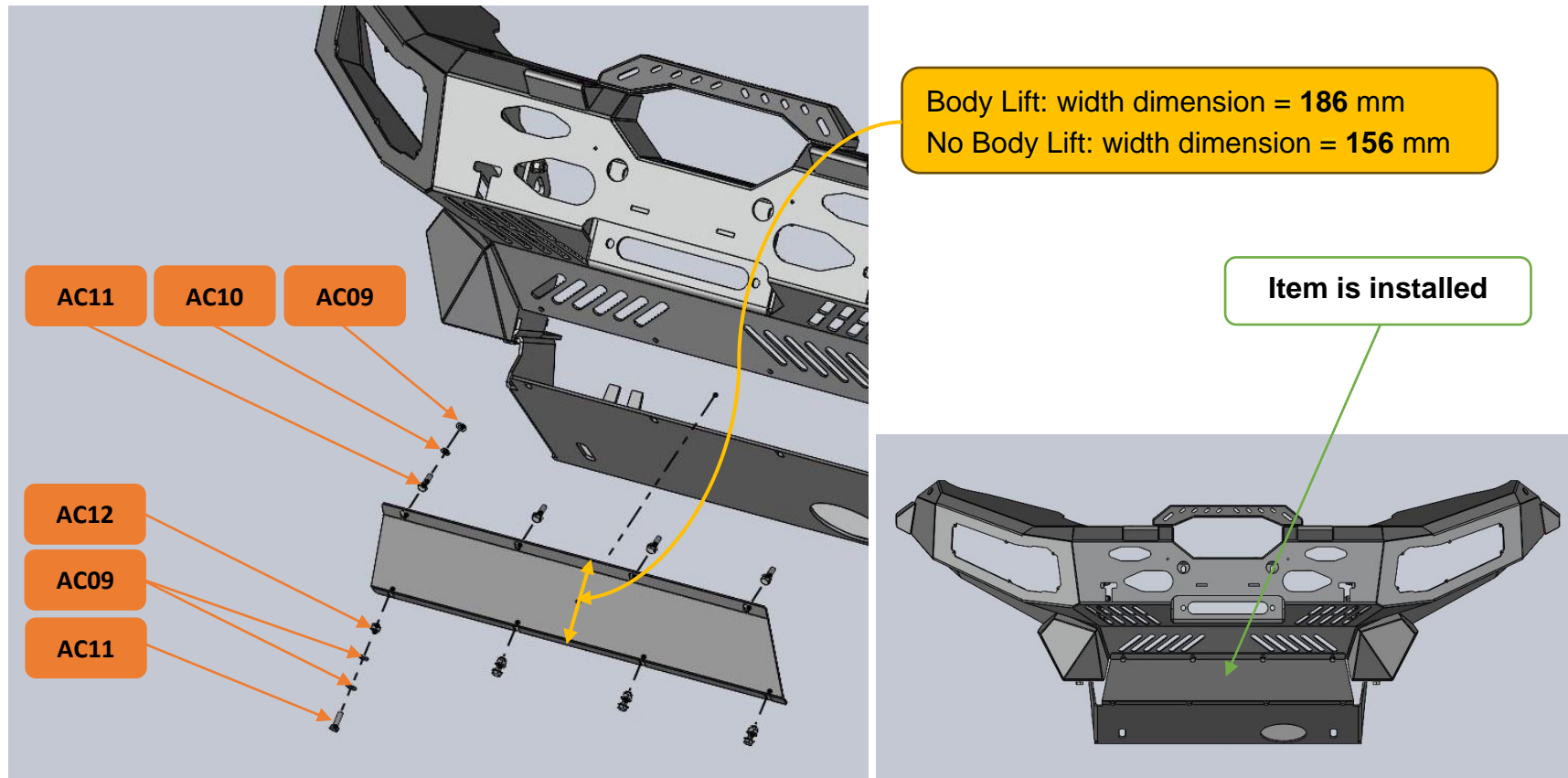
AC03 x 06 pcs : Steel Nord Lock Washer M12 x 13mmID x 19mmOD x 2.2mmT

AC04 x 12 pcs : Steel Flat Washer M12 x 13mmID x 26mmOD x 2.2mmT

Bolt Tightening Torque: 88(Nm)

WI-011-R2

STEP 4: Install Bottom Cover Plate into the Car, bolted with 8 positions.



AC09 x 12 pcs : Steel Flat Washer M8 x 8.4mmID x 17mmOD x 2.5mmT

AC10 x 04 pcs : Steel Spring Washer M8

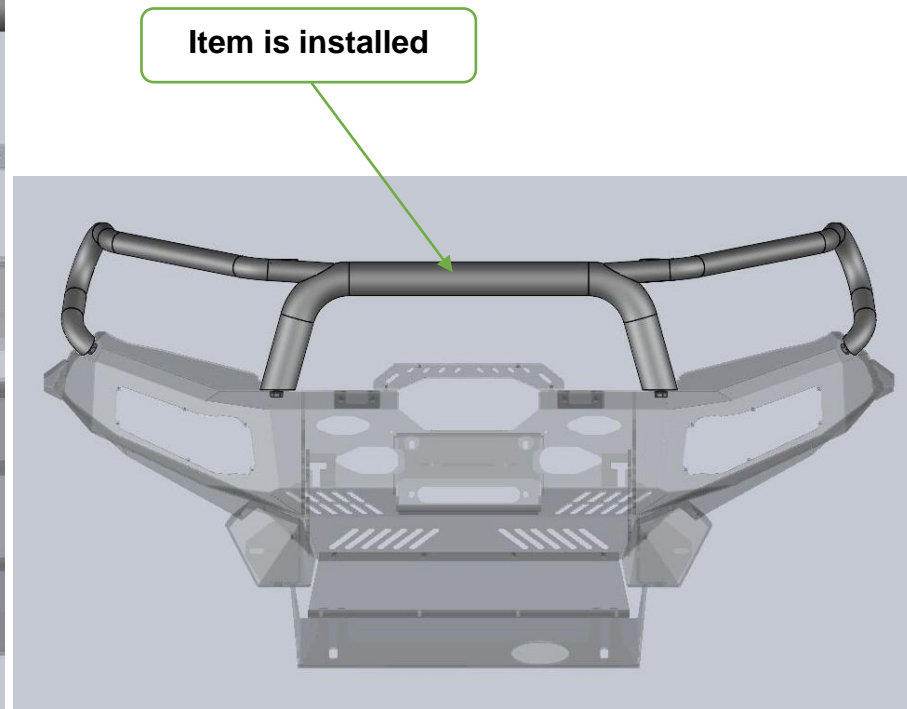
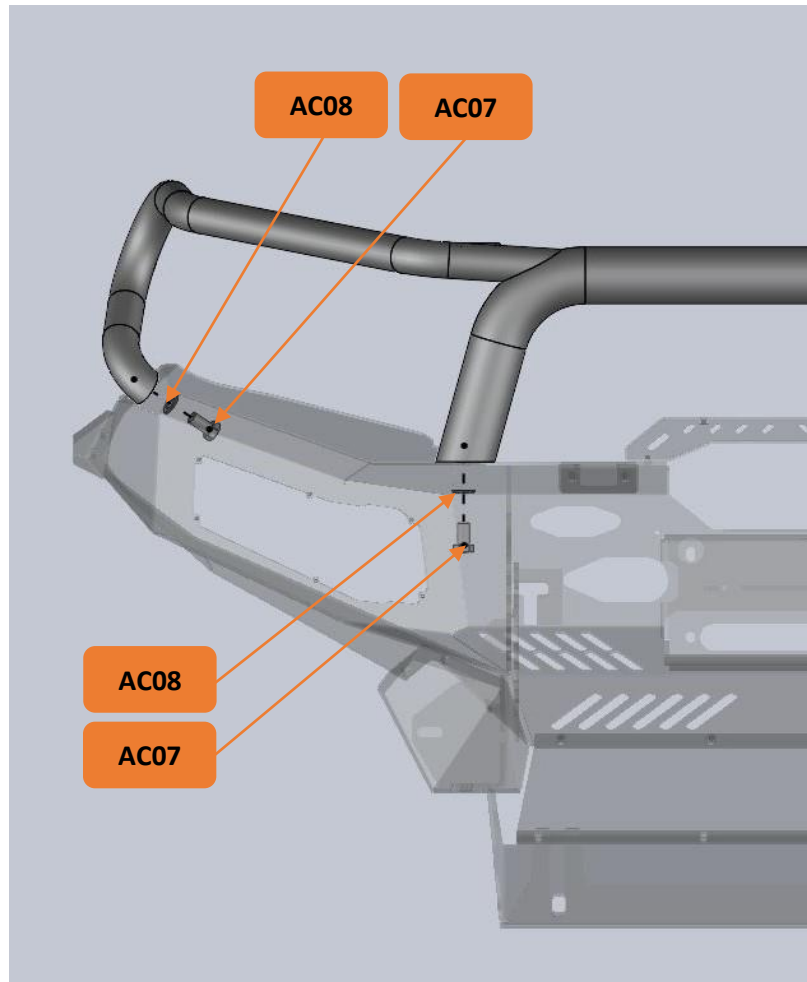
AC11 x 08 pcs : Hex Head Bolt M8 x 25mmL x P1.25

AC12 x 04 pcs : Nyloc Nut M8 x P1.25

Bolt Tightening Torque: 24(Nm)

WI-011-R2

STEP 5.1: Install Triple Hoop into the Car, bolted with 4 positions. **[Use for Triple Hoop only]**



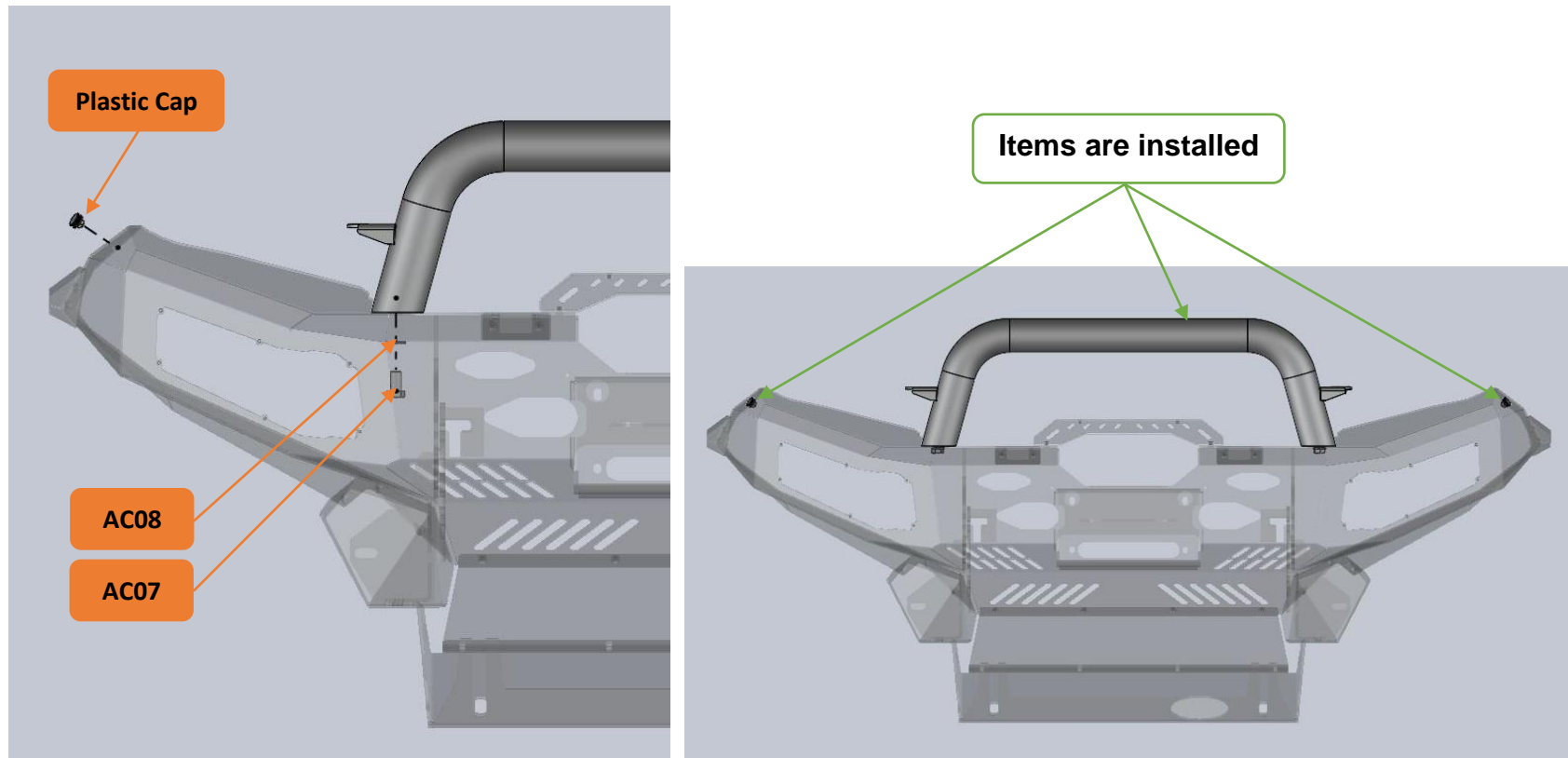
AC07 x 04 pcs : Hex Head Bolt M16 x 30mmL x P2.0

AC08 x 04 pcs : Steel Flat Washer M16 x 17mmID x 30mmOD x 2.5mmT

Bolt Tightening Torque: 88(Nm)

WI-011-R2

STEP 5.2: Install Single Hoop & Plastic Cap into the Car, bolted with 4 positions. **[Use for Single Hoop only]**



Plastic Cap x 02 pcs

Bolt Tightening Torque: 3(Nm)

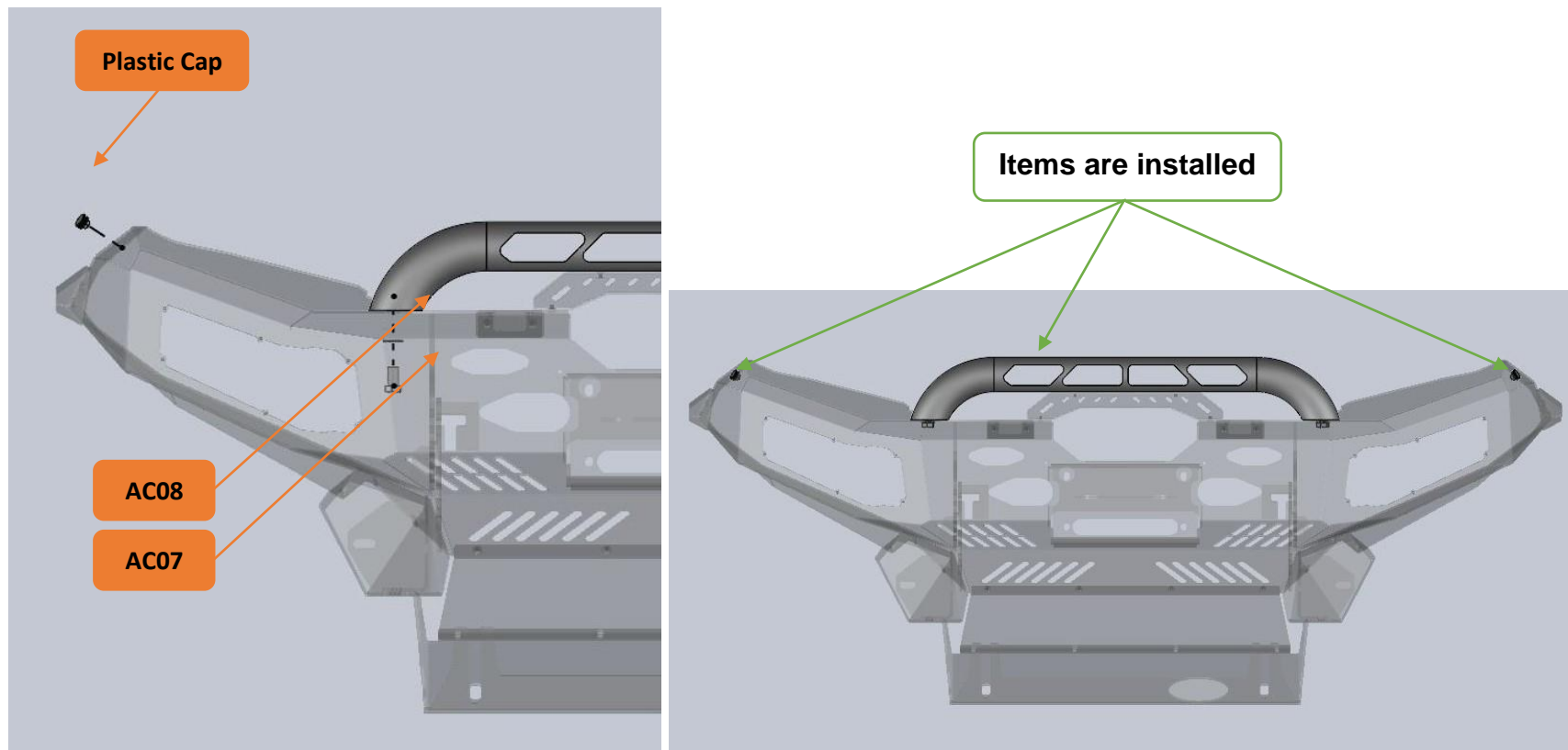
AC07 x 02 pcs : Hex Head Bolt M16 x 30mmL x P2.0

AC08 x 02 pcs : Steel Flat Washer M16 x 17mmID x 30mmOD x 2.5mmT

Bolt Tightening Torque: 88(Nm)

WI-011-R2

STEP 5.3: Install Low Hoop & Plastic Cap into the Car, bolted with 4 positions. **[Use for Low Hoop only]**



Plastic Cap x 02 pcs

Bolt Tightening Torque: 3(Nm)

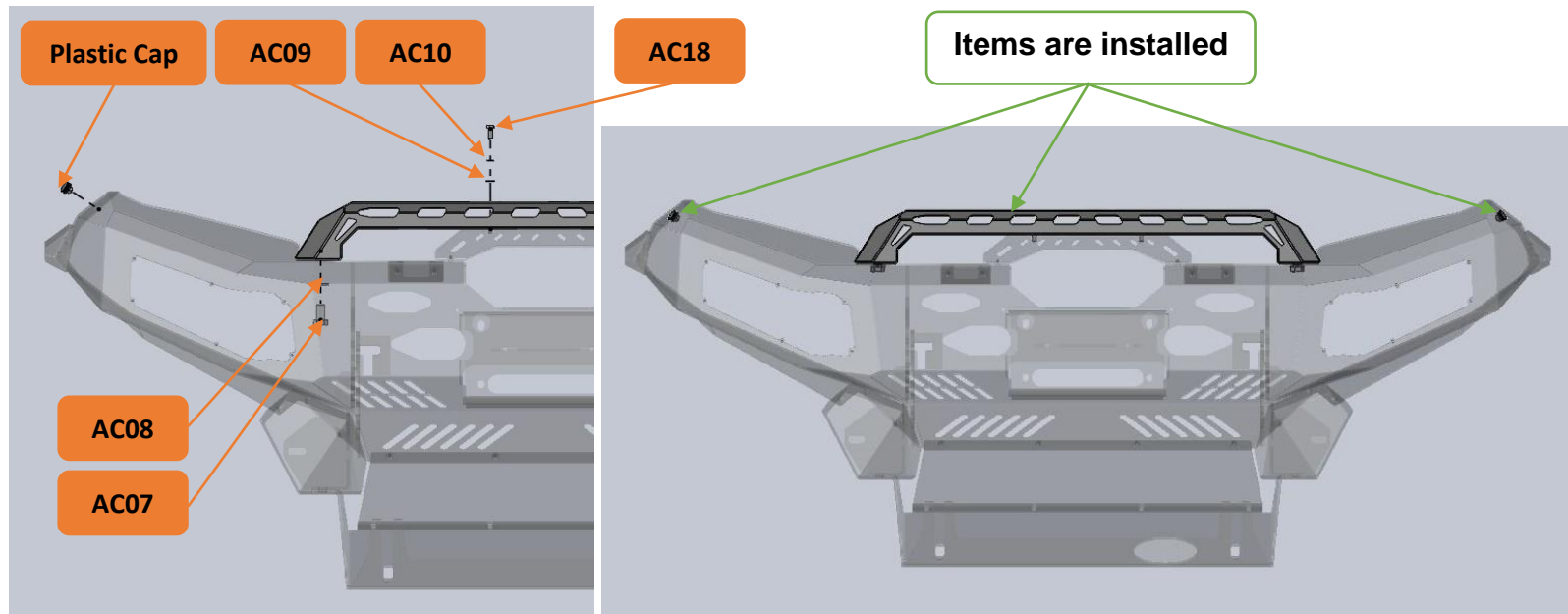
AC07 x 02 pcs : Hex Head Bolt M16 x 30mmL x P2.0

AC08 x 02 pcs : Steel Flat Washer M16 x 17mmID x 30mmOD x 2.5mmT

Bolt Tightening Torque: 88(Nm)

WI-011-R2

STEP 5.4: Install Fabricated Low Hoop & Plastic Cap into the Car, bolted with 6 positions. **[Use for Fabricated Low Hoop only]**



Plastic Cap x 02 pcs

Bolt Tightening Torque: 3(Nm)

AC07 x 02 pcs : Hex Head Bolt M16 x 30mmL x P2.0

AC08 x 02 pcs : Steel Flat Washer M16 x 17mmID x 30mmOD x 2.5mmT

Bolt Tightening Torque: 88(Nm)

AC09 x 02 pcs : Steel Flat Washer M8 x 8.4mmID x 17mmOD x 2.5mmT

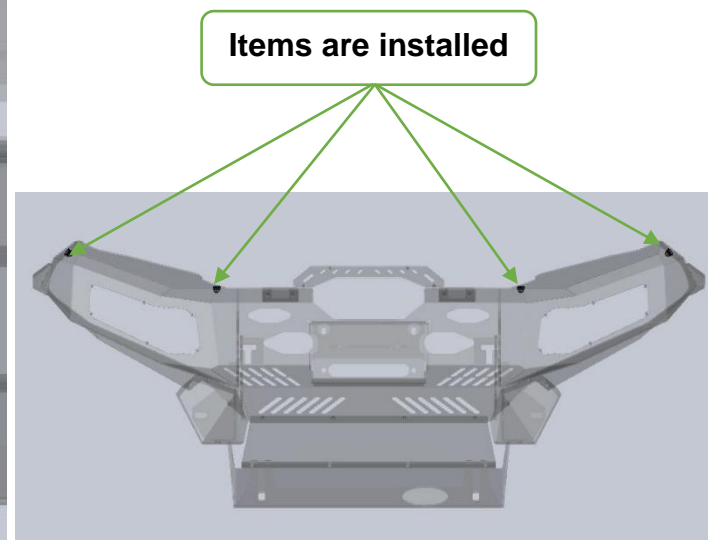
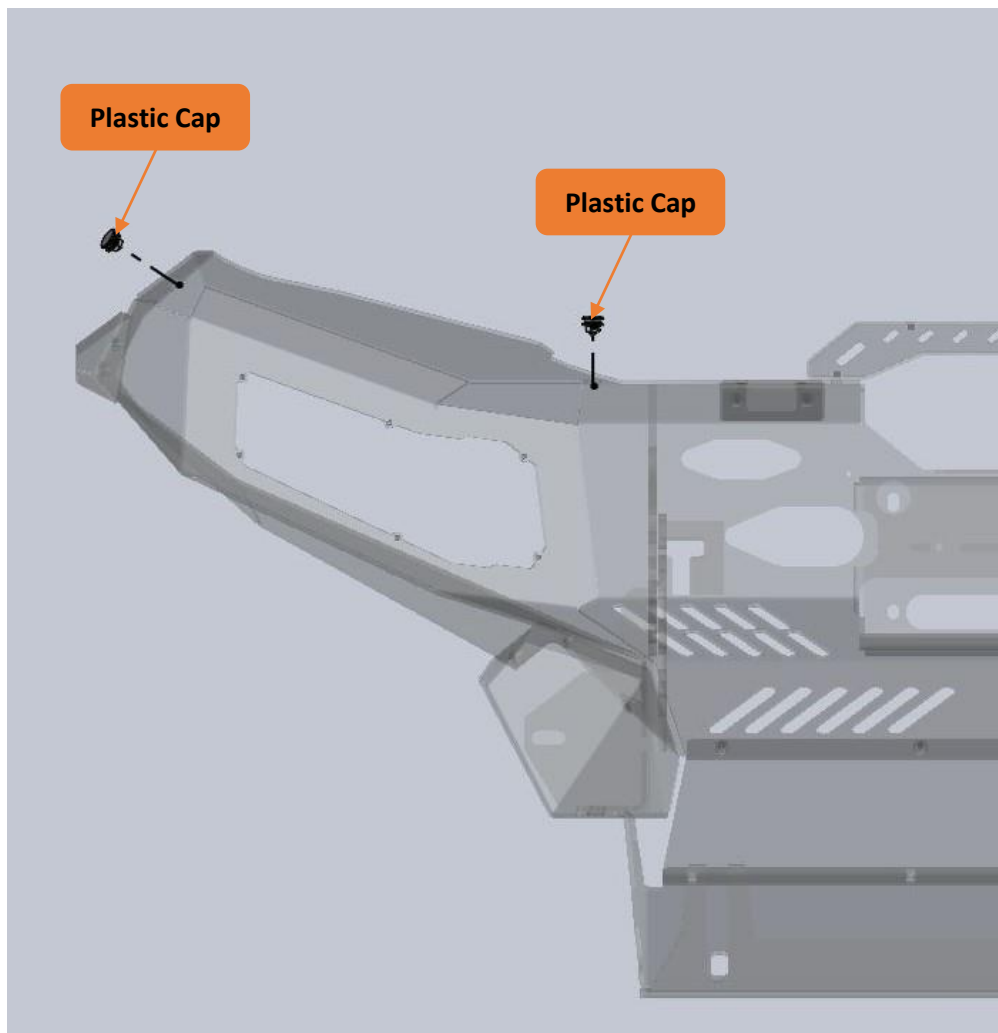
AC10 x 02 pcs : Steel Spring Washer M8

AC18 x 02 pcs : Hex Head Bolt M8 x 20mmL x P 1.25

Bolt Tightening Torque: 88(Nm)

WI-011-R2

STEP 5.5: Install Plastic Cap into the Car, bolted with 4 positions. **[Use for No Hoop only]**

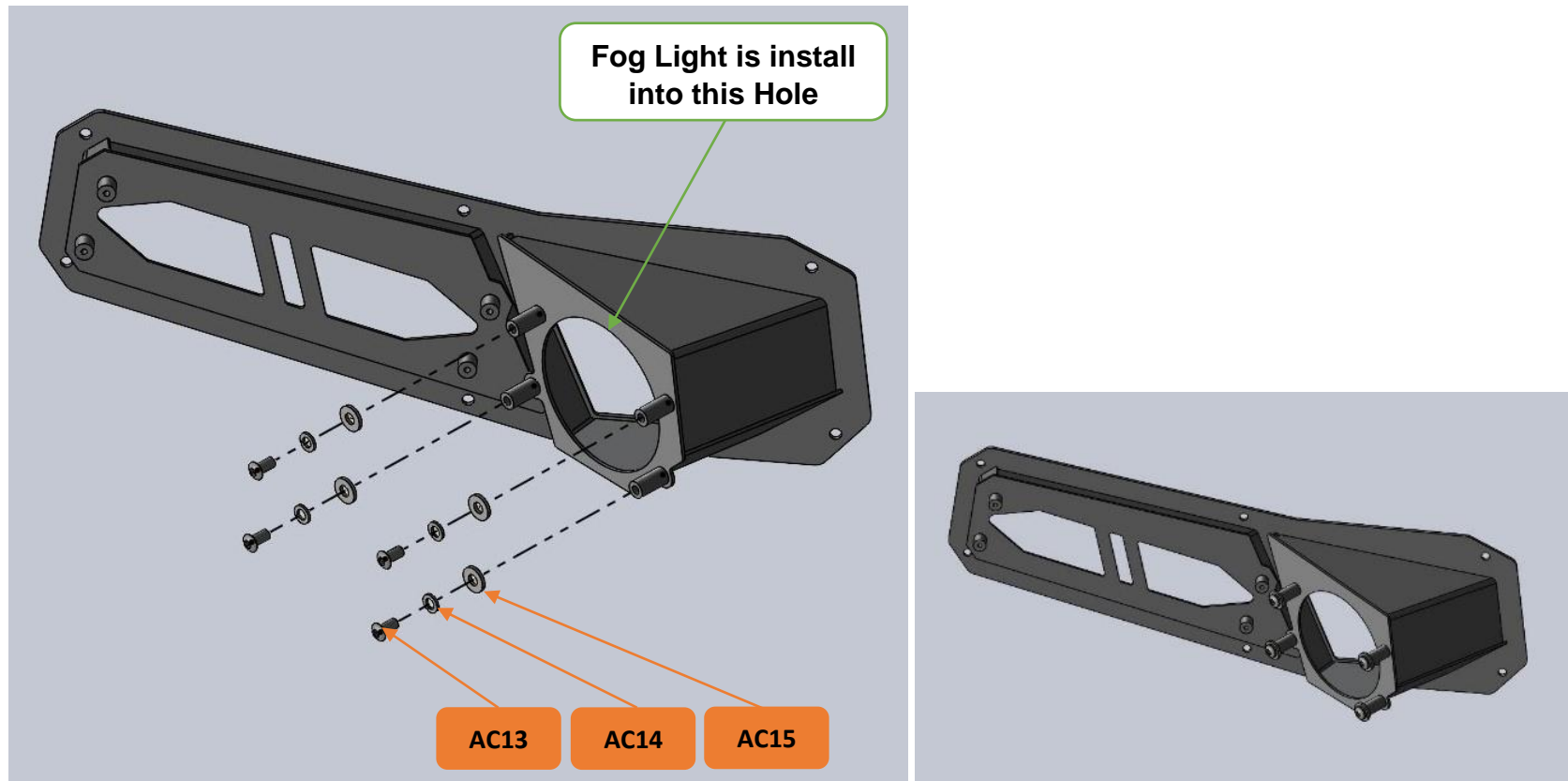


Plastic Cap x 04 pcs

Bolt Tightening Torque: 3(Nm)

WI-011-R2

STEP 6.1: Install Fog Light into Light Panel RH & LH, bolted both side with 8 positions.



AC31 x 01 pcs : Fog Lights (Pair) with Accessories

AC13 x 08 pcs : M6 x 12mmL x P1 Steel Hex socket (allen Key) & Domed Head Bolt

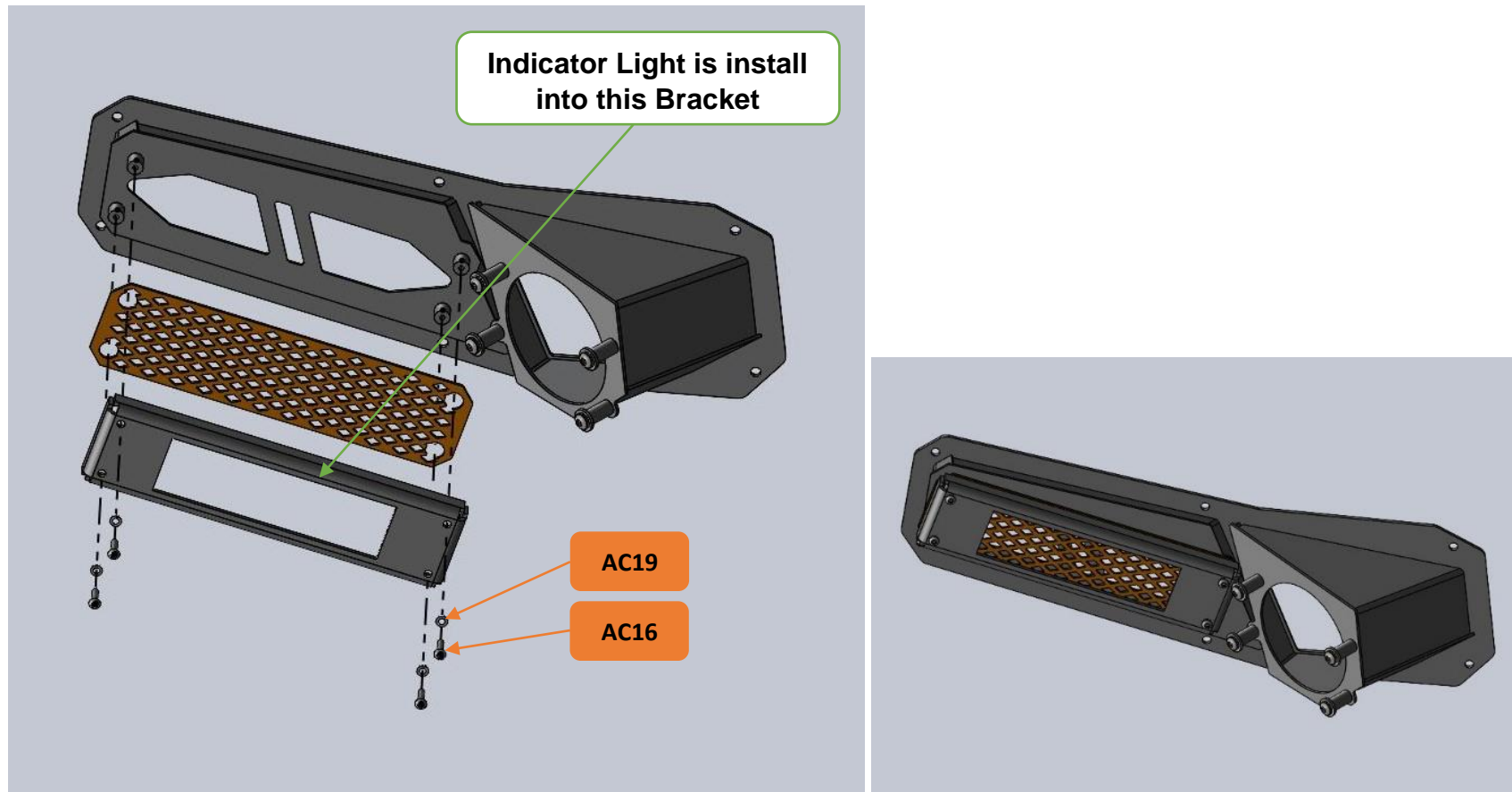
AC14 x 08 pcs : Steel Spring Washer M6

AC15 x 08 pcs : Steel Flat Washer M6 x 6.6mmID x 15mmOD x 2mmT

Bolt Tightening Torque: 10(Nm)

WI-011-R2

STEP 6.2: Install Indicator Light into Light Panel RH & LH, bolted both side with 8 positions.



AC32 x 01 pcs : Indicator Lights (Pair)

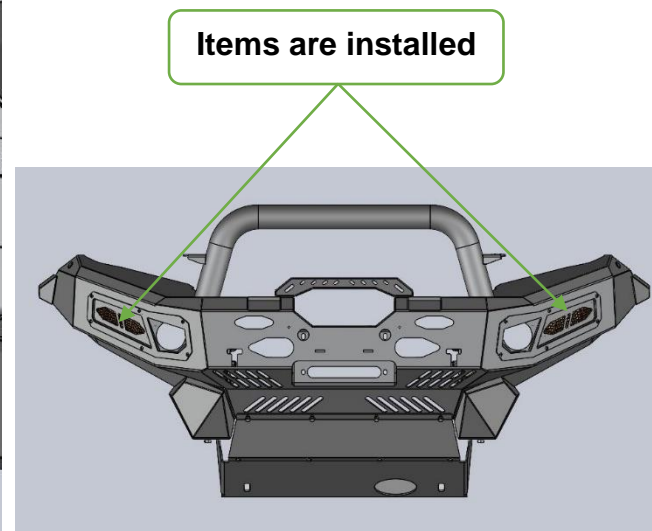
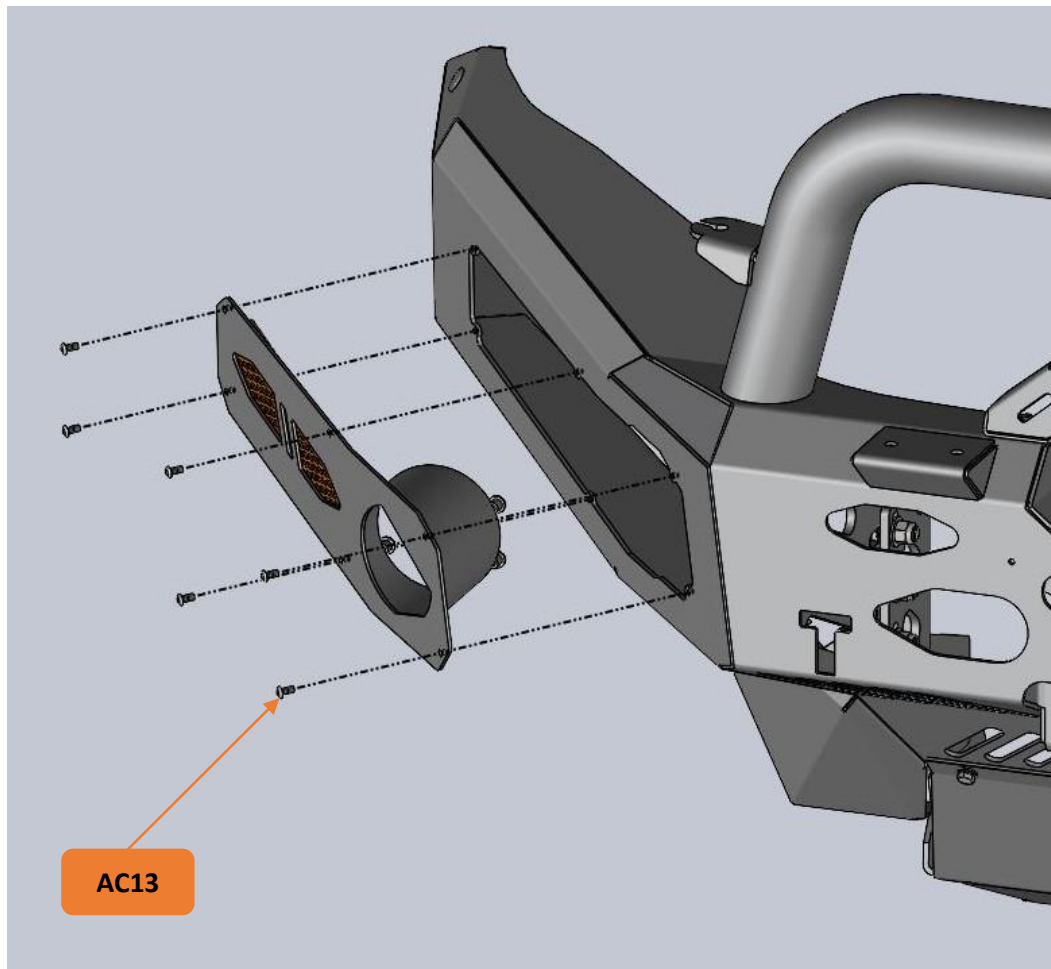
AC16 x 08 pcs : M4 x 16mmL x P0.7 Hex socket (allen Key) & Domed Head Bolt

AC19 x 08 pcs : Steel Spring Washer M4

Bolt Tightening Torque: 3(Nm)

WI-011-R2

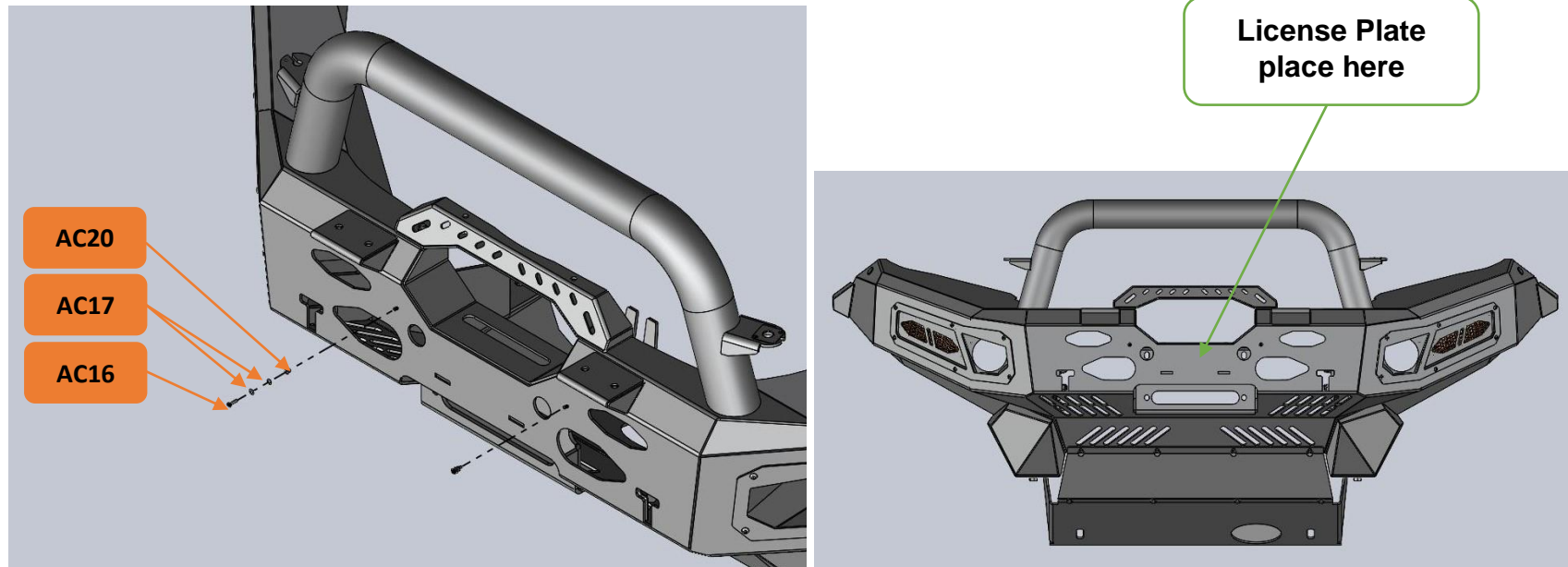
STEP 6.3: Install Light Panel RH & LH, bolted both sides with 12 positions.



AC13 x 12 pcs : M6 x 12mmL x P1 Steel Hex socket (allen Key) & Domed Head Bolt
Bolt Tightening Torque: 10(Nm)

WI-011-R2

STEP 7: Install License Plate, bolted with 2 positions.



AC16 x 02 pcs : M4 x 16mmL x P0.7 Hex socket (allen Key) & Domed Head Bolt

AC17 x 04 pcs : Steel Flat Washer M4 x 4.3mmID x 9mmOD x 0.8mmT

AC20 x 02 pcs : Nylock Nut M4 x P0.7

Bolt Tightening Torque: 3(Nm)

Recommendation:

Due to the variation of vehicle chassis some shimming may be required by using the extra washers supplied (**AC04**) to assist in lining up the bar where required.

----- END -----